

Why a Capital Stewardship Campaign?

A Capital Stewardship Campaign is a large and important endeavor requiring expertise and time we simply do not have available internally. The minimal expenditures we incur are investments in the success of the campaign. To help us with this we have hired a consultant who is a member of the church of Christ and has successfully led over 100 churches through their campaigns. Our church leaders have determined this investment to be a prudent use of our Lord's finances.

Setting Up A Pillar Of Service

What can I do to help?

- First and foremost make prayer your priority. Pray individually and collectively that God will lead us to success, and that with that success He will lead us to new opportunities to serve Him more effectively within our church family, our community, and through our mission efforts. Pray for faithfulness, boldness, and that all we do will be consistent with God's will.
- Don't wait to be asked to participate. Let your desire to participate be known either with the survey forms provided or by simply telling our church leaders you want to help. When asked...step forward!
- When the time comes to make your personal financial pledge...do so with much prayer, with generosity, and with full faith that God will provide.
- Grasp the vision before us, become involved, become excited, and become committed to God's work. TOGETHER, we as a family in faith will celebrate the "Setting Up A Pillar Of Service" at Lake Harbour Drive church of

Him who overcomes I will make a
pillar in the temple of my God.

Never again will he leave it.

I will write on him the name of my God and the
name of the city of my God, the new Jerusalem,
which is coming down out of heaven from my
God; and I will also write on him my new name.

Revelation 3:12

What is sacrificial giving?

It is a state of giving that requires a reassessment of our spending and lifestyle needs (or perceived needs). It is above and beyond our regular financial support to the church. It will probably mean a realignment of personal priorities. It will cost the giver something. How do you know what this amount will be?...Only through prayer, study, and personal evaluation. No one can and no one will suggest to you what that should be.

When will I need to make a financial commitment and in what way?

The initial date of commitment is scheduled for Sunday, May 17, 2009 with an opportunity for early commitments. Also, the two weeks following May 17 will be open for additional commitments.

The Campaign is designed to solicit pledges from the membership covering a **three year period**. This means the amount you pledge should be an amount considered over the next three years.

THIS MUST BE ABOVE THE AMOUNT YOU ARE CURRENTLY GIVING THROUGH YOUR WEEKLY OFFERING. WE WILL NOT BE CUTTING THE NEEDS OF ONE MINISTRY TO SUPPORT THE VISION OF THIS MINISTRY. WILL IT NEED TO BE SACRIFICIAL GIVING--YES!



Lake Harbour Drive Church of Christ
338 Lake Harbour Drive
Ridgeland, MS 39157
www.lakeharbourcoc.org

Questions & Answers

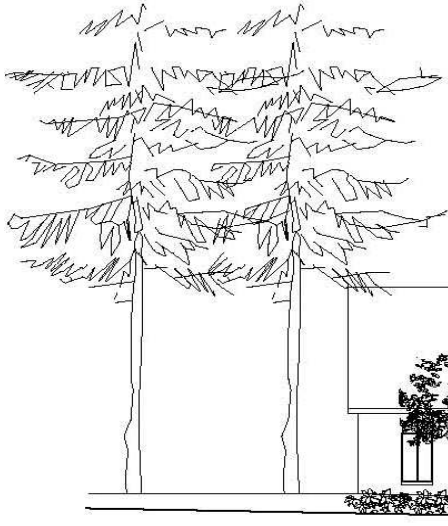


About Our
Capital Stewardship Campaign
at
Lake Harbour Drive
Church of Christ

What construction is planned?

Over the past year, in particular, God has blessed us with substantial growth: growth in families joining our family, growth in numbers of our children and youth, and growth in the opportunities we are finding to serve our Lord. To meet these opportunities, we must provide a worship facility that meets a variety of needs...needs brought about by God's rich blessings to us. The following list is in order of priority:

1. Expand our classrooms especially for our children and youth.
2. Substantially improve the serviceability of our facility, including the fellowship facility, to our teens and young adult members.
3. Enlarge our foyer area and make it more welcoming to our members and guests.
4. Make our nursery and restrooms more accessible and efficient.
5. Enlarge and improve the drive and parking area to our building and grounds.
6. Create a more efficient administrative area in our facility.
7. Enlarge and enhance our auditorium, making it more comfortable and adequate for our congregational worship .



**“Unless the LORD builds the house,
its builders labor in vain.”**

Psalms 127:1

How much will it cost?

The current estimated cost for the entire project is over 1.7 million dollars. This is a lot for a church family of our size especially during these particular times. This we will not deny. Neither will we deny that with God's blessing we can “do all things.” The “phases” of prioritized needs obviously fall into cost categories substantially less than this amount. With God's guidance we will take the success of this campaign, review other funding options available and then determine the extent of construction we can undertake which will provide a truer cost at that time. That will be freely shared with the entire Lake Harbour church family.

When will we begin the actual construction process?

This is not a sudden decision of our church leaders. Lake Harbour Drive Church of Christ has had a Building Committee for several years. This Committee has been led by a deacon who consistently evaluates our facility and keeps our elders aware of its needs. For a few years now, our current vision has been in hand in the form of design drawings and financial analysis. We have consulted with builders and various funding professionals. In short, we have already started.

Under the guidance of our Building Committee, the current vision for facility improvement has been developed into stages of construction designed to meet priority needs first. These have been identified.

Once this Campaign is complete, the church leaders will review its success and, with the Building Committee, meet with contractors and establish a schedule of construction at that time. Throughout this process, the eldership of Lake Harbour will keep the entire church family informed and encourage questions and recommendations.



Setting Up A Pillar Of Service

Genesis 28: 18 & Revelation 3: 12